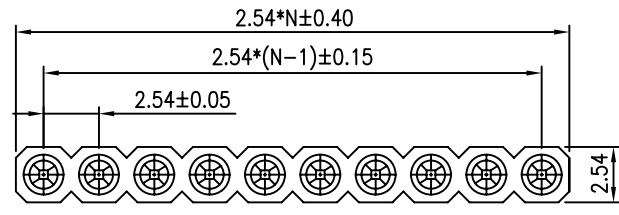


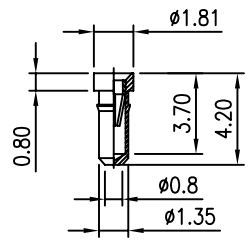
REV.	DESCRIPTION	DRAWN	CHECKED	APPROVED
A	NEW RELEASE	LL 06/15/06'		

- NOTES:
- ELECTRICAL:
 - Current rating: 3Amps/contact max.
 - Contact resistance: $\leq 20m\Omega$ /contact.
 - Insulation resistance: $\geq 1000M\Omega$ at V=100V.
 - Operating voltage: 60V AC/DC.

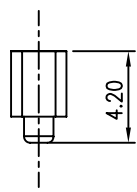
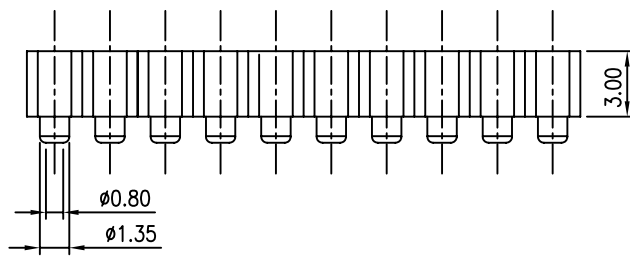
2. PRODUCT NUMBER CODE:
- DS1002-06 - X X X
- CLIP PLATING
 - 6: Full Tin
 - 8: Full gold flash
 - C: Full gold 3u"
 - A: Full gold 10u"
 - PIN PLATING
 - 6: Full Tin
 - 8: Full gold flash
 - C: Full gold 3u"
 - A: Full gold 10u"
 - No. OF CONTACTS
 - 1*1 to 1*40
 - 2*2 to 2*40



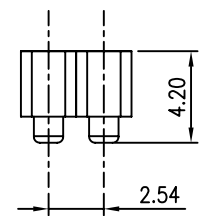
N=NO. OF CONTACTS



CONTACT



SINGLE ROW



DUAL ROWS

GENERAL TOLERANCE		ANGLE TOLERANCE		PROJECTION		TITLE	IC SOCKET PITCH 2.54mm PIN LENGTH 4.20mm	
X.	±0.60	X.	±5'	UNITS	mm			
.X	±0.38	.X	±3'	SHEET SIZE	A4	SERIES	DS1002-06 SERIES	
.XX	±0.25	.XX	±2'					
DRAWING TYPE		CUSTOMER						
SCALE	1:1	SHEET	10F1					
DRAWING NO.		C-DS1002-06-XXXX		CONNFLY ELECTRONIC CO. LTD				

晨翔电子有限公司
CONNFLY ELECTRONIC CO. LTD