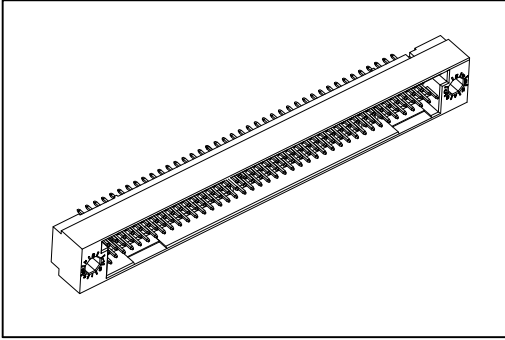


9001 Series

DIN41612 240P Male



Material:

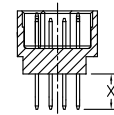
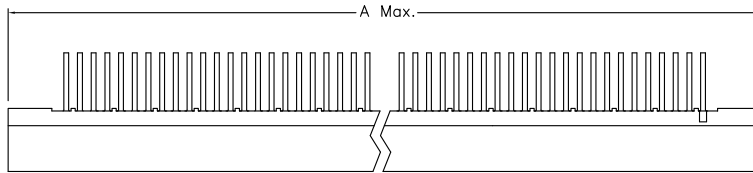
Housing: High Temperature Plastic UL94V-0.
Contacts: Copper Alloy.

Electrical Characteristics:

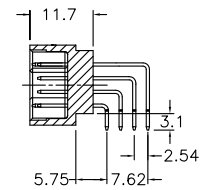
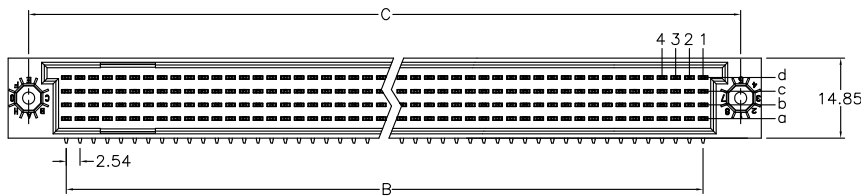
Current Rating: 2 A.
Dielectric Withstanding Voltage: AC 1000V.
Insulator Resistance: 1000MΩ min.
Contact Resistance: 20mΩ max.
Operating Temperature: -55°C ~+125°C.

Features:

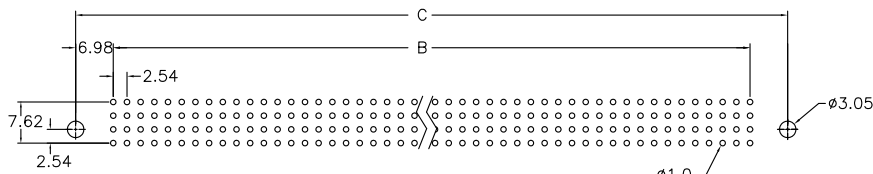
* Mates with Female 4 Row



Straight Type



Right Angle Type



P.C. Board Layout

X Length	1	2	Dimension		
	2.50	4.00			
Position	A	B	C		
100	82.55	60.96	74.93		
128	100.33	78.74	92.71		
160	120.65	99.06	113.03		
200	146.05	124.46	138.43		
240	171.45	149.86	163.83		

Ordering information

9001- Series
7: 2.54mm
3: Male R/A / Male /STR
240: Position
1: Dip Length 1: Dip Length 2: Dip Length
C: Selective Gold Plated
00: G/F
A: Tray Package

Guide Pin(9001-71-GP) Available for Right Angle Type.