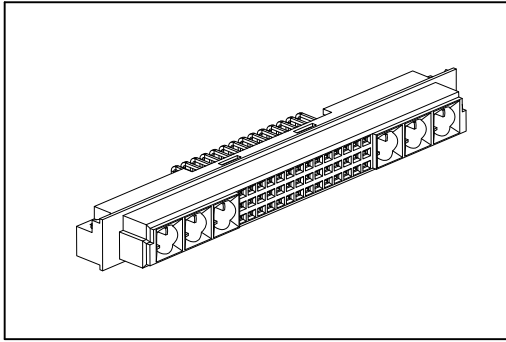


9001 Series

DIN41612 M Type Female



Material:

Housing: Thermoplastic Polyester Glass Filled UL94V-0.

Contacts: Copper Alloy.

Electrical Characteristics:

Current Rating: 2 A.

Dielectric Withstanding Voltage: AC 1000V.

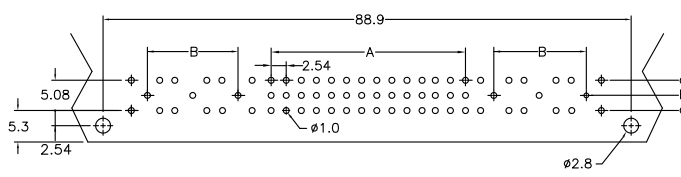
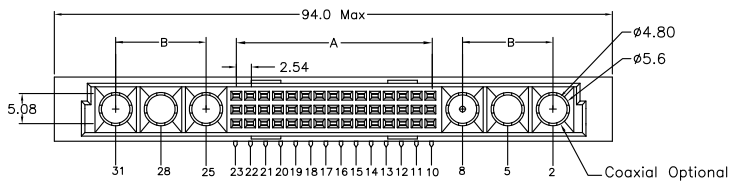
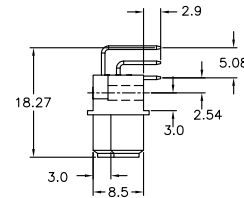
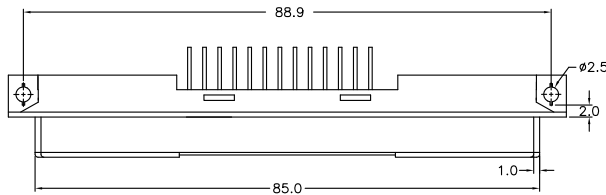
Insulator Resistance: 1000MΩ min.

Contact Resistance: 20mΩ max.

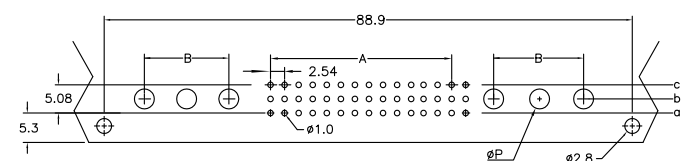
Operating Temperature: -55°C ~+125°C.

Features:

- * Mates with Male 9001-91
9001-93



P.C. Board Layout (Coaxial)



P.C. Board Layout (Power)

Current Rating(A)	10A	20A	30A	40A
Dimension(øP)	2.10	3.25	3.57	4.15
Dimension				
A	(2.54 x No of Contact)/3-2.54			
B	(7.62 x No of Coaxial)/2-7.62			
Pitch	Position	Rows with Contacts	Contact Arrange	with Coaxial Or Power
2.54mm	78	a b c		2 Pcs
	60	a b c		4 Pcs
	42	a b c		6 Pcs
	24	a b c		8 Pcs
	6	a b c		10 Pcs
	52	a - c		2 Pcs
	40	a - c		4 Pcs
	28	a - c		6 Pcs
	16	a - c		8 Pcs
	4	a - c		10 Pcs

Ordering information

9001- 9 4 42 06

Series

4: Female

Position

02: With 2 Coaxial or Power
04: With 4 Coaxial or Power
06: With 6 Coaxial or Power
08: With 8 Coaxial or Power
10: With 10 Coaxial or Power

C

C: Selective Gold Plated

00

00: G/F

D

D: Dip Type

A

A: Tray Package

* The Special Contacts Must be Ordered Separately, Pls Refer to Page CC03.