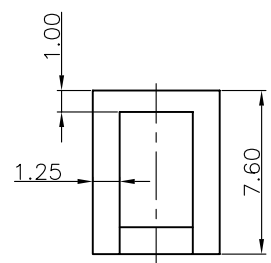
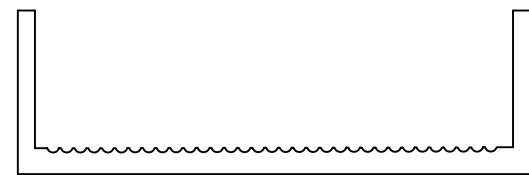
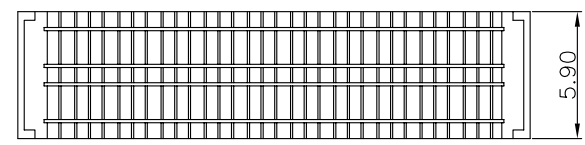
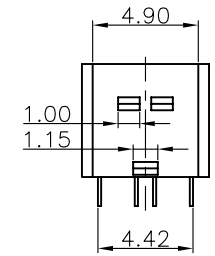
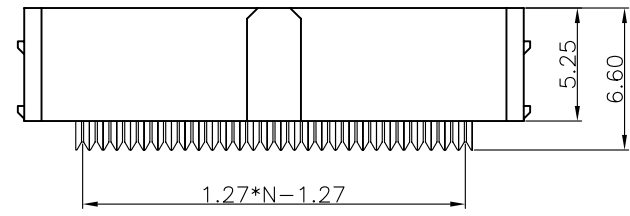
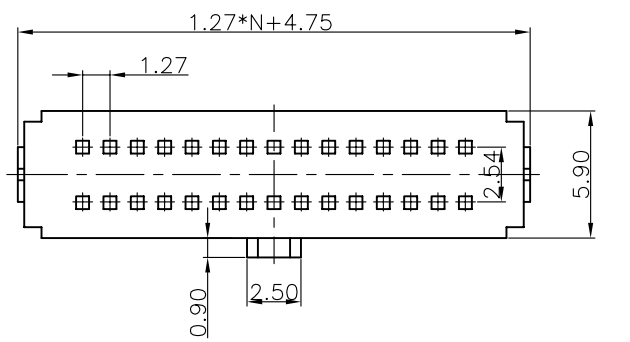


REV.	DESCRIPTION	DRAWN	CHECKED	APPROVED
A	NEW RELEASE	YCH 09/06/08'		



NOTES:

- ELECTRICAL CHARACTERISTICS:
 - CONTACT RESISTANCE: 30mΩ Max.
 - DIELECTRIC WITHSTANDING VOLTAGE: 500V AC(rms) FOR 1 MINUTE.
 - INSULATION RESISTANCE: 1000MΩ Min.
- ENVIRONMENT CHARACTERISTICS:
 - TEMPERATURE RANGE: -40°C~+105°C.
- PART NUMBER: DS1016-01
- PRODUCT NUMBER CODE: DS1016-01- X X X X

HOUSING COLOR
 A:GRAY
 B:BLACK
 L:BLUE

CONTACT PLATING
 2:NICKEL + GOLD FLASH
 6:FULL TIN
 8:FULL GOLD FLASH

POLARIZATION SUPPORT
 A:W/
 B:W/O

No. OF CONTACTS
 10 20 26 30
 34 40 50 60
 68 70 80 90
 100

GENERAL TOLERANCE		ANGLE TOLERANCE		PROJECTION		TITLE	IDC SOCKET PITCH 1.27*2.54mm		
X.	±0.60	X.	±5°	UNITS	mm	SHEET SIZE	A4	SERIES	DS1016-01 SERIES
.X	±0.38	.X	±3°						
.XX	±0.25	.XX	±2°						
DRAWING TYPE		CUSTOMER							
SCALE		1:1	SHEET	1 OF 1					
DRAWING NO.		C-DS1016-01-XXXX							