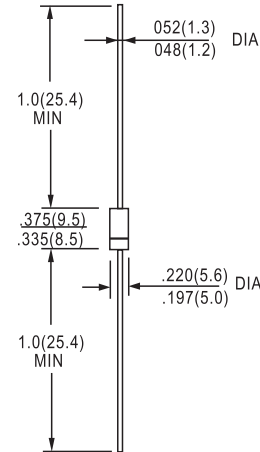


FEATURES

- Superfast recovery times-epitaxial construction.
- Low forward voltage, high current capability.
- Exceeds environmental standards of MIL-S-19500/228.
- Hermetically sealed.
- Low leakage.
- High surge capability.
- Plastic package has Underwriters Laboratories Flammability Classification 94V-O utilizing Flame Retardant Epoxy Molding Compound.
- Pb free product are available : 99% Sn above can meet Rohs environment substance directive request

MECHANICAL DATA

Case: Molded plastic, DO-201AD
 Terminals: Axial leads, solderable to MIL-STD-202, Method 208
 Polarity: Color Band denotes cathode end
 Mounting Position: Any
 Weight: 0.04 ounce, 1.12 gram

DO-27


Dimensions in inches and (millimeters)

MAXIMUM RATINGS AND ELECTRICAL CHARACTERISTICS

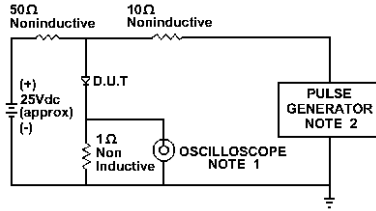
Ratings at 25°C ambient temperature unless otherwise specified.
 Resistive or inductive load, 60Hz.

PARAMETER	SYMBOL	ER300	ER301	ER301A	ER302	ER303	ER304	ER306	UNITS
Maximum Recurrent Peak Reverse Voltage	V_{RRM}	50	100	150	200	300	400	600	V
Maximum RMS Voltage	V_{RMS}	35	70	105	140	210	280	420	V
Maximum DC Blocking Voltage	V_{DC}	50	100	150	200	300	400	600	V
Maximum Average Forward Current .375"(9.5mm) lead length at $T_A=55^\circ\text{C}$	I_{AV}	3.0							A
Peak Forward Surge Current :8.3ms single half sine-wave superimposed on rated load(JEDEC method)	I_{FSM}	125							A
Maximum Forward Voltage at 3.0A DC	V_F	0.95			1.25		1.70		V
Maximum DC Reverse Current at $T_A=25^\circ\text{C}$ Rated DC Blocking Voltage $T_A=125^\circ\text{C}$	I_R	5.0 300							μA
Maximum Reverse Recovery Time(Note 1)	T_{RR}	35							ns
Typical Junction capacitance (Note 2)	C_J	35							pF
Typical Junction Resistance(Note 3)	$R_{\theta JA}$	20							$^\circ\text{C} / \text{W}$
Operating and Storage Temperature Range T_J, T_{STG}	T_J, T_{STG}	-55 TO +150							$^\circ\text{C}$

NOTES:1. Reverse Recovery Test Conditions: $I_F=.5\text{A}$, $I_R=1\text{A}$, $I_{rr}=.25\text{A}$
 2. Measured at 1 MHz and applied reverse voltage of 4.0 VDC
 3. Thermal resistance from junction to ambient and from junction to lead length 0.375"(9.5mm) P.C.B. mounted

RATINGS AND CHARACTERISTICS CURVES

ER300 THRU ER306



NOTE: 1. Rise Time = 7ns max.
Input Impedance = 1 megohm. 22pF
2. Rise Time = 10ns max.
Source Impedance = 50 Ohms

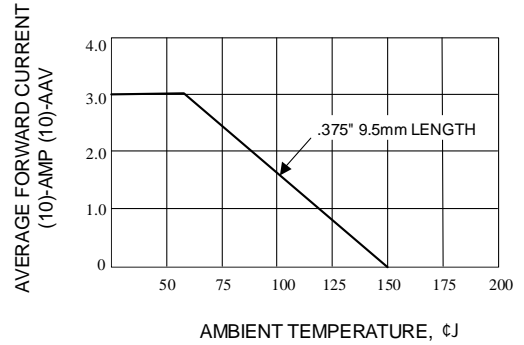
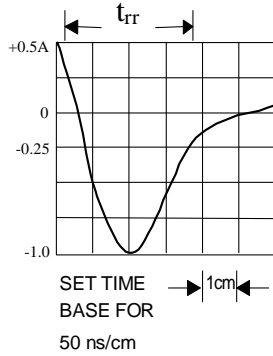


Fig. 1-REVERSE RECOVERY TIME CHARACTERISTIC AND TEST CIRCUIT DIAGRAM

Fig. 2-MAXIMUM AVERAGE FORWARD CURRENT RATING

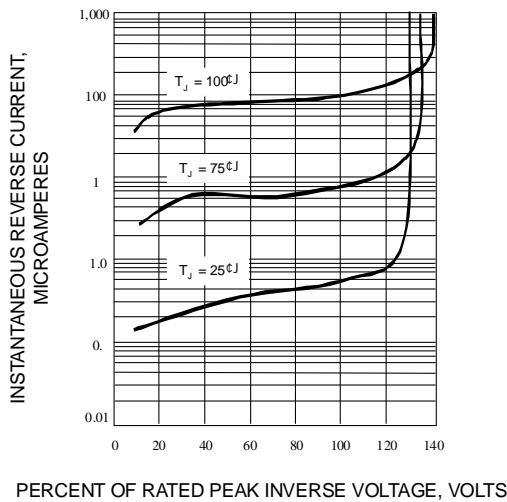


Fig. 3-TYPICAL REVERSE CHARACTERISTICS

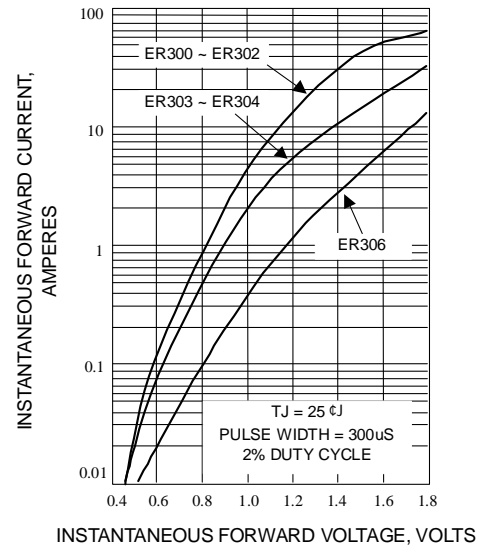


Fig. 4-FORWARD CURRENT DERATING CURVE

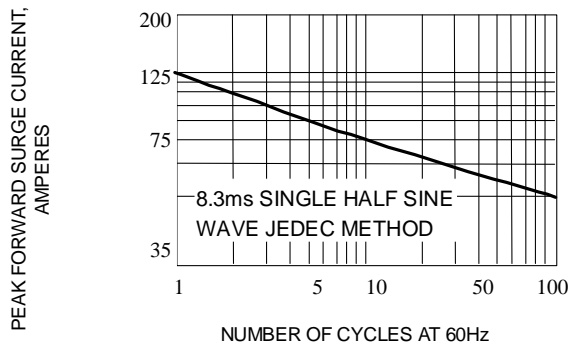


Fig. 5-MAXIMUM NON-REPETITIVE SURGE CURRENT

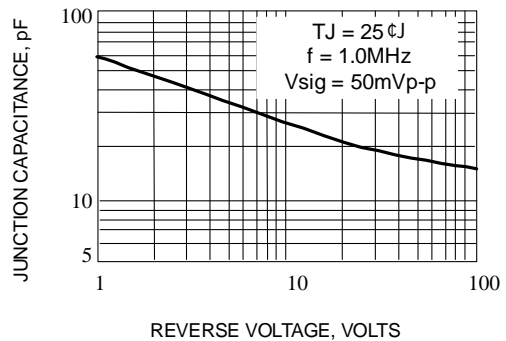


Fig. 6-TYPICAL JUNCTION CAPACITANCE